

Cementi

**Project**

La semplicità della materia, la neutralità dei toni, la molteplicità delle superfici, offrono un prodotto altamente versatile.

**Project**


The simplicity of the matter, the neutral shades, the multiple surfaces offer a very versatile product.

# Project

60x60 - 30x60

**Interno - Esterno**  
Indoor - Outdoor

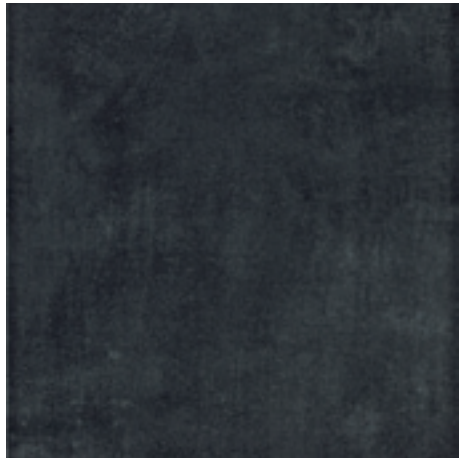
**Gres porcellanato**  
Porcelain stoneware

 9,5 mm	PEI 5	R 9 Indoor 30x60 60x60	R 11 Outdoor 30x60
---	----------	------------------------------------	-----------------------------



Rivestimento: Mosaico Project Tortora 30x30  
Pavimento: Project Tortora 60x60

## Cementi



Project Antracite  
60x60

43



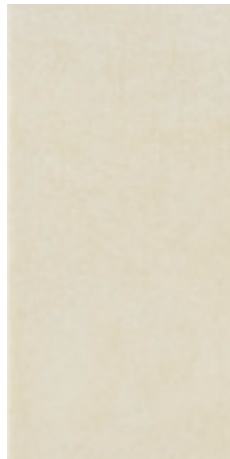
Project Antracite  
30x60

32



Project Ivory  
60x60

43

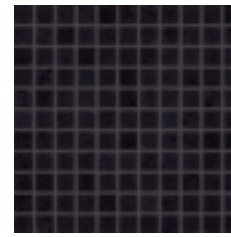


Project Ivory  
30x60

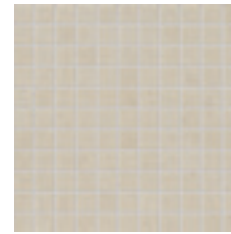
32

## Decori

Decors



Mosaico Project Antracite **19**  
30x30



Mosaico Project Ivory **19**  
30x30

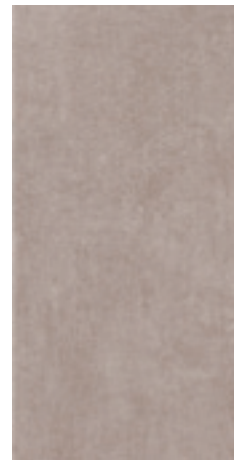
**Decori**  
Decors



Project Pearl **43**  
60x60



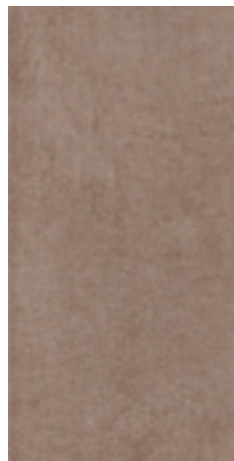
Project Pearl **32**  
Project Pearl R11 **35**  
30x60



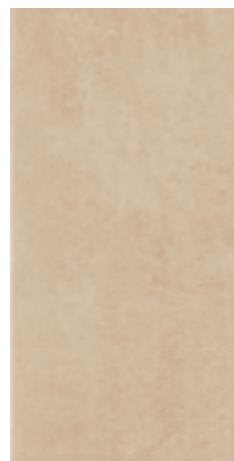
Project Grey **32**  
30x60



Project Tortora **43**  
60x60



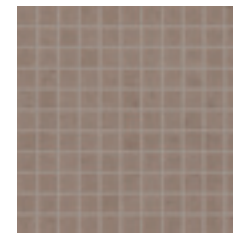
Project Tortora **32**  
Project Tortora R11 **35**  
30x60



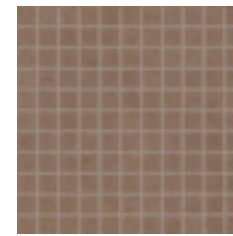
Project Beige **32**  
Project Beige R11 **35**  
30x60



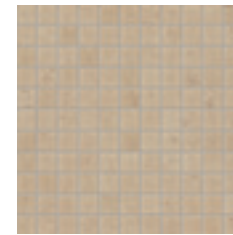
Mosaico Project Pearl **19**  
30x30



Mosaico Project Grey **19**  
30x30



Mosaico Project Tortora **19**  
30x30



Mosaico Project Beige **19**  
30x30



Rivestimento: Mosaico Project Ivory 30x30  
Pavimento: Project Ivory 60x60

## Note tecniche

### Technical notes



**Prodotto caratteristico stonalizzato e fornito miscelato.**  
Characteristic non coloured product supplied mixed.

**Materiale da posarsi con fuga di almeno 3 mm.**  
Tiles must be installed with at least 3 mm joint.

## Pezzi speciali

Special trims

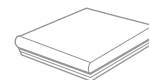


Battiscopa  
Project

7x60

**R**

**8**

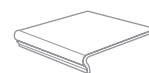


Angolare con torello  
incollato Project

30x30

**R**

**64**



Gradino con torello  
incollato Project

30x30

**R**

**34**

## Imballi

Packaging

Formati - Sizes						
	Pz./Box	Mq./Box	Kg./Box	Box/Pallet	Mq./Pallet	Kg./Pallet
60x60	3	1,08	22,5	32	34,56	720
30x60	6	1,08	20,5	48	51,84	984

## Collanti e stucchi

Adhesive and grouting

Project Antracite	Sigillante consigliato per la fuga: NERO 2/12 FM AD	<b>13</b>
Project Ivory	Sigillante consigliato per la fuga: BEIGE 2/12 FM AD	<b>10</b>
Project Pearl	Sigillante consigliato per la fuga: GRIGIO PERLA 2/12 FM AD	<b>8</b>
Project Tortora	Sigillante consigliato per la fuga: GRIGIO 2/12 FM AD	<b>7</b>
Project Beige	Sigillante consigliato per la fuga: BEIGE 2/12 FM AD	<b>10</b>
Project Grigio	Sigillante consigliato per la fuga: GRIGIO 2/12 FM AD	<b>7</b>
Per tutti i colori	Collante consigliato: EXELL FLEX	<b>36</b>