



Loft



FLOOR = Loft Cemento 52x52 / WALL = Brick Loft Bianco 30x60

Bianco

Colored Body



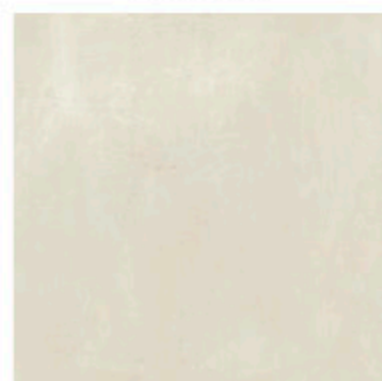
COD. SR8030 Bianco Rettificato 80x80 **A6**

Colored Body



COD. S10030 Bianco 30x60 **42**

Colored Body



COD. S52030 Bianco 52x52 **42**

Tortora

Colored Body



COD. SR8031 Tortora Rettificato 80x80 **A6**

Colored Body



COD. S10031 Tortora 30x60 **42**

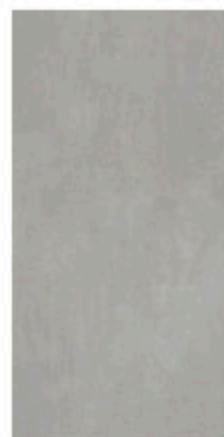
Colored Body



COD. S52031 Tortora 52x52 **42**

Cemento

Colored Body



COD. S10032 Cemento 30x60 **42**

Colored Body



COD. S52032 Cemento 52x52 **42**

Muretto Brick Abbinato

Loft Bianco



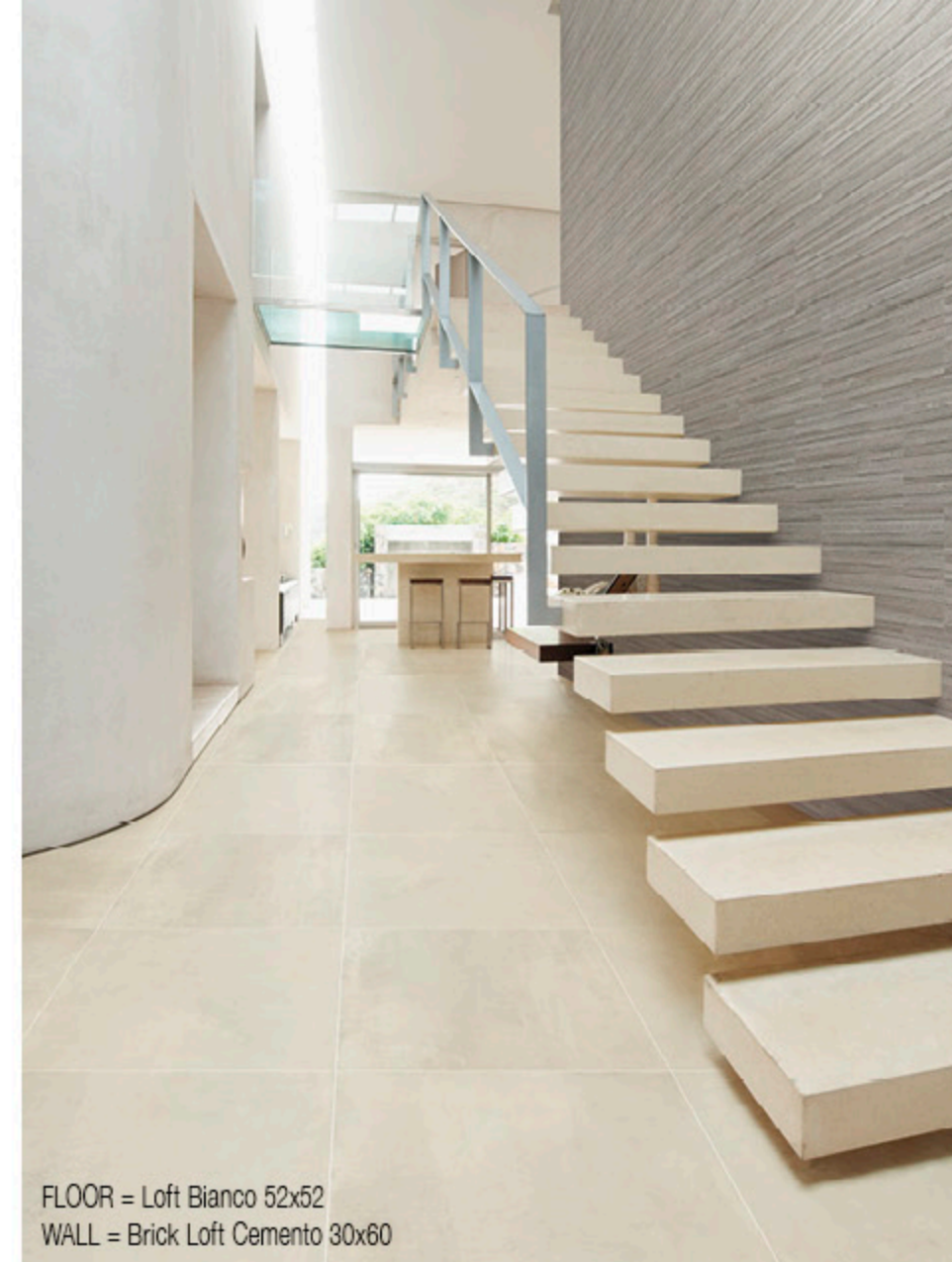
COD. SBR10030 30x60 **44**
Brick Loft Bianco

Loft Cemento



COD. SBR10032 30x60 **44**
Brick Loft Cemento

FLOOR = Loft Bianco 52x52
WALL = Brick Loft Cemento 30x60

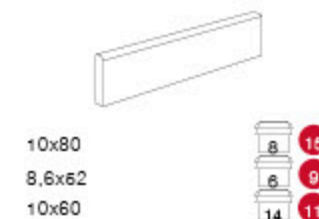


Caratteristiche Tecniche

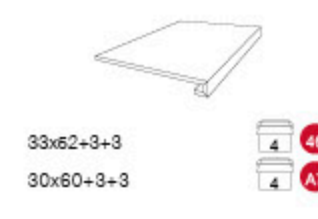
Technical Characteristics / Caracteristiques Techniques / Technische Eigenschaften

Pezzi Speciali / Trim Pieces

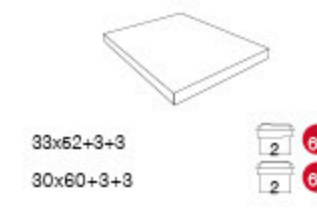
BATTISCOPA: SBT + COD.



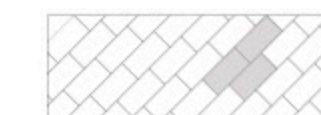
GRADONE: CR + COD.



ANGOLO GRADONE: ACR + COD.



Consigli Di Posi
Suggested Laying



BIANCO	V
CEMENTO	V
TORTORA	V
GRIGIO	V
ANTRACITE	V

30x60 100%

P.E.I.:
↓

IMBALLI / Packaging

Scatola	Boxes	Kartons	Boites
F.to	Pz	m ²	Kg
80x80	2	1,28	28
62x62	4	1,08	22,60
30x60	7	1,26	24,9
BRICK 30x60	7	1,26	26,10

Palette	Pallets	Paletts	Pallet
F.to	Sc	m ²	Kg
80x80	40	61,2	1.140
62x62	36	39	830
30x60	40	60,4	1.600
BRICK 30x60	40	60,4	1.064