

Alpi Nero cm 30x60,4



Alpi DIGITAL TECHNOLOGY

Gres Porcellanato Smaltato ad Impasto Colorato
Coloured-Body Glazed Porcelain Stoneware - Grès Cérame Émaillé à Pâte Colorée - Glasiertes Feinsteinzeug mit gefärbter Masse



60,4x60,4/30x60,4

Spessore - Thickness - Épaisseur - Stärke
9,2 - 8,5 mm

F A R O
C E R A M I C H E

Gres Porcellanato Smaltato ad Impasto Colorato
Coloured-Body Glazed Porcelain Stoneware - Grès Cérame Emailé à Pâte Colorée - Glasiertes Feinsteinzeug mit gefärbter Masse

Spessore - Thickness - Épaisseur - Stärke
9,2 - 8,5 mm



Alpi

DIGITAL TECHNOLOGY



Gres Porcellanato Smaltato ad Impasto Colorato
Coloured-Body Glazed Porcelain Stoneware - Grès Cérame Emailé à Pâte Colorée - Glasiertes Feinsteinzeug mit gefärbter Masse

60,4x60,4/30x60,4

Spessore - Thickness - Épaisseur - Stärke
9,2 - 8,5 mm

F A R O
C E R A M I C H E



Alpi Argento cm 60,4x60,4

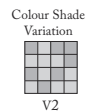


Alpi Grigio cm 60,4x60,4



Alpi Beige cm 30x60,4

Almond



ALAL180 Alpi Almond **F195 MQ**
cm 60,4x60,4 - 23 ³/₄"x 23 ³/₄"
sp.9,2mm



ALAL160 Alpi Almond **F175 MQ**
cm 30x60,4 - 11 ³/₄"x 23 ³/₄"
sp.8,5mm



ALAL268 Alpi Almond **F040 PC***
Battiscopa
cm 7,5x60,4 - 2 ⁷/₈"x 23 ³/₄"

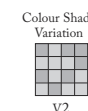


ALAL138 Alpi Almond **F370 MQ**
Mosaico su rete
cm 30x30 - 11 ³/₄"x 11 ³/₄"
sp.8,5mm



ALAL260 Alpi Almond **F245 PC***
Elemento L
cm 30x60,4 - 11 ³/₄"x 23 ³/₄"
sp.8,5mm

Beige



ALBE180 Alpi Beige **F195 MQ**
cm 60,4x60,4 - 23 ³/₄"x 23 ³/₄"
sp.9,2mm



ALBE160 Alpi Beige **F175 MQ**
cm 30x60,4 - 11 ³/₄"x 23 ³/₄"
sp.8,5mm



ALBE268 Alpi Beige **F040 PC***
Battiscopa
cm 7,5x60,4 - 2 ⁷/₈"x 23 ³/₄"

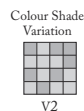


ALBE138 Alpi Beige **F370 MQ**
Mosaico su rete
cm 30x30 - 11 ³/₄"x 11 ³/₄"
sp.8,5mm



ALBE260 Alpi Beige **F245 PC***
Elemento L
cm 30x60,4 - 11 ³/₄"x 23 ³/₄"
sp.8,5mm

Argento



ALAR180 Alpi Argento
cm 60,4x60,4 - 23 ³/₄"x 23 ³/₄"
sp.9,2mm

F195 MQ



ALAR160 Alpi Argento
cm 30x60,4 - 11 ³/₄"x 23 ³/₄"
sp.8,5mm

F175 MQ



ALAR268 Alpi Argento
Battiscopa
cm 7,5x60,4 - 2 ⁷/₈"x 23 ³/₄"

F040 PC*



ALAR138 Alpi Argento
Mosaico su rete
cm 30x30 - 11 ³/₄"x 11 ³/₄"
sp.8,5mm



tessera
cm 6x6
2 ³/₈"x 2 ³/₈"

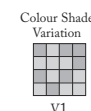
F370 MQ



ALAR260 Alpi Argento
Elemento L
cm 30x60,4 - 11 ³/₄"x 23 ³/₄"
sp.8,5mm

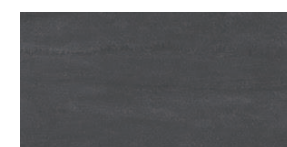
F245 PC*

Nero



ALNE180 Alpi Nero
cm 60,4x60,4 - 23 ³/₄"x 23 ³/₄"
sp.9,2mm

F195 MQ



ALNE160 Alpi Nero
cm 30x60,4 - 11 ³/₄"x 23 ³/₄"
sp.8,5mm

F175 MQ



ALNE268 Alpi Nero
Battiscopa
cm 7,5x60,4 - 2 ⁷/₈"x 23 ³/₄"

F040 PC*

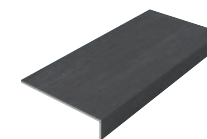


ALNE138 Alpi Nero
Mosaico su rete
cm 30x30 - 11 ³/₄"x 11 ³/₄"
sp.8,5mm



tessera
cm 6x6
2 ³/₈"x 2 ³/₈"

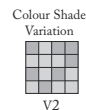
F370 MQ



ALNE260 Alpi Nero
Elemento L
cm 30x60,4 - 11 ³/₄"x 23 ³/₄"
sp.8,5mm

F245 PC*

Grigio



ALGR180 Alpi Grigio **F195 MQ**
cm 60,4x60,4 - 23 ³/₄"x 23 ³/₄"
sp.9,2mm



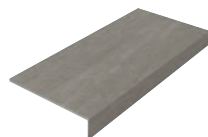
ALGR160 Alpi Grigio **F175 MQ**
cm 30x60,4 - 11 ³/₄"x 23 ³/₄"
sp.8,5mm



ALGR268 Alpi Grigio **F040 PC***
Battiscopa
cm 7,5x60,4 - 2 ⁷/₈"x 23 ³/₄"



ALGR138 Alpi Grigio **F370 MQ**
Mosaico su rete
cm 30x30 - 11 ³/₄"x 11 ³/₄"
sp.8,5mm









ALGR260 Alpi Grigio **F245 PC***
Elemento L
cm 30x60,4 - 11 ³/₄"x 23 ³/₄"
sp.8,5mm

CARATTERISTICHE TECNICHE

TECHNICAL FEATURES - CARACTERISTIQUES TECHNIQUES TECHNISCHE EIGENSCHAFTEN

EN14411 - ISO 13006 Encl. G

| | | |
|---|--|--|
| EN ISO 10545-12 Resistenza al gelo Frost resistance Résistance au gel Frostbeständigkeit  EN ISO Alpi Richiesta-Request Demande - Gefragt Resist-Good Résiste-Beständig | EN ISO 10545-4 Resistenza alla flessione Breaking strength Résistance à la flexion Biegefestigkeit  EN ISO Alpi min. 35 N/mm ² Conforme - Comply with Conforme - Génies | Bor 3000 ANSI A 137.1-2012 (DCOF) Coefficient Dynamico di Attrito Dynamic Coefficient of Friction Coefficient Dynamique de Frottement Dynamische Werte der Rutschhemmung  NORMA Alpi min. 0,42 0,66 |
| EN ISO 10545-13 Resistenza ai prodotti chimici di uso domestico Resistance to home chemical products Résistance aux produits chimiques d'utilisation domestique Beständigkeit gegen Chemikalien  EN ISO Alpi GB min. GA | DIN 51130 Resistenza allo scivolamento Resistance to slipping Résistance au glissement Rutschfestigkeit  NORMA Alpi Max R13 R9 | ASTM C 1028: 2007 Fattore di resistenza alla scivolosità (norme USA) Ann-sleed resistance grade Grè de resistance à la glissance Rutschfestigkeit  NORMA Alpi > 0,60 DRY 0,70 WET 0,62 |

| ALPI | cm | mm | inches | box scatola boîte karton | | | pallet | | |
|----------------|------|------|---|--------------------------|-------|-------|--------|-------|----------|
| | | | | pc | mq | kg | box | mq | kg |
| 180 | 60,4 | 60,4 | 9,2 23 ³ / ₄ " 23 ³ / ₄ " ³ / ₄ " | 4 | 1,460 | 32,00 | 32 | 46,72 | 1.024,00 |
| 160 | 30 | 60,4 | 8,5 11 ³ / ₄ " 23 ³ / ₄ " ³ / ₄ " | 8 | 1,450 | 26,50 | 40 | 58,00 | 1.060,00 |
| 138 Mosaico | 30 | 30 | 8,5 11 ³ / ₄ " 11 ³ / ₄ " ³ / ₄ " | 10 | 0,900 | 16,45 | 36 | 32,40 | 592,00 |
| 268 Battiscopa | 7,5 | 60,4 | - 2 ⁷ / ₈ " 23 ³ / ₄ " - | 26 | - | 21,50 | - | - | - |
| 260 Elemento L | 30 | 60,4 | 8,5 11 ³ / ₄ " 23 ³ / ₄ " ³ / ₄ " | 4 | - | - | - | - | - |

I pesi riportati nella tabella sono indicativi, per motivi produttivi possono subire leggere variazioni
The weights listed in the table are approximate. For productive reasons may slightly change.
Die in der Tabelle angezeigten Gewichte sind nur hinweisend und können aus Produktionsgründe leichte Änderungen ertragen.
Les pois dans la grille ci-dessus sont indicatifs, il peuvent changer légèrement a cause de raisons productives.